



OBIEE11g “How to Guide Series”

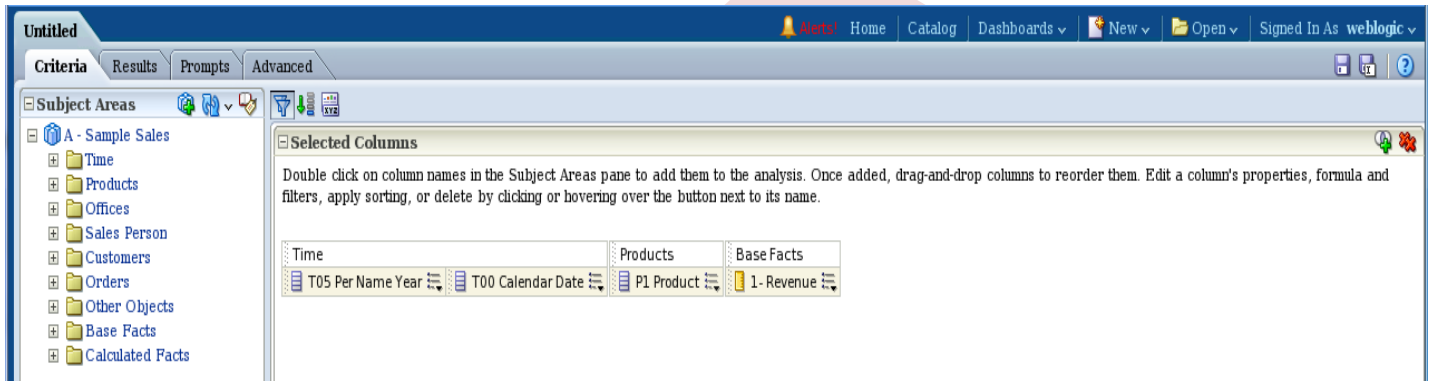
Hands-On guide OBIEE11 Date/Time functions Month Function

BISP is committed to provide BEST learning material to the beginners and advance learners. In the same series, we have prepared a complete “OBIEE11g How to Series” build on Sample OBIEE reports and Dashboard. Download our collection of “How to Series” for Oracle BI, Informatica, Data Stage product suite. There are 100s of case studies are available in our blog/site for free access for learners. **Join our professional training program to learn from the experts.**

History:

Version	Description	Change	Author	Publish Date
0.1	Initial Draft		Upendra Upadhyay	1 st Jul 2012
0.1	1 st Review		Amit Sharma	5 th Jul 2012

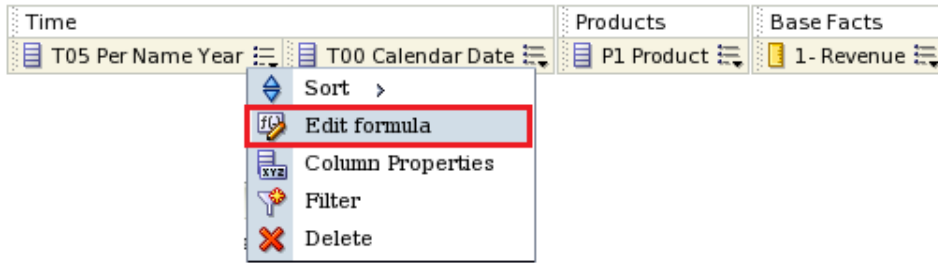
Step1 :- Click on New→Analysis then chose subject area from Select Subject Area. Below window will open , Select tables column from left side Subject Area pane within Criteria. Here we can double click on tables column or drag and drop tables column from Subject Area pane to Selected Columns pane as below.



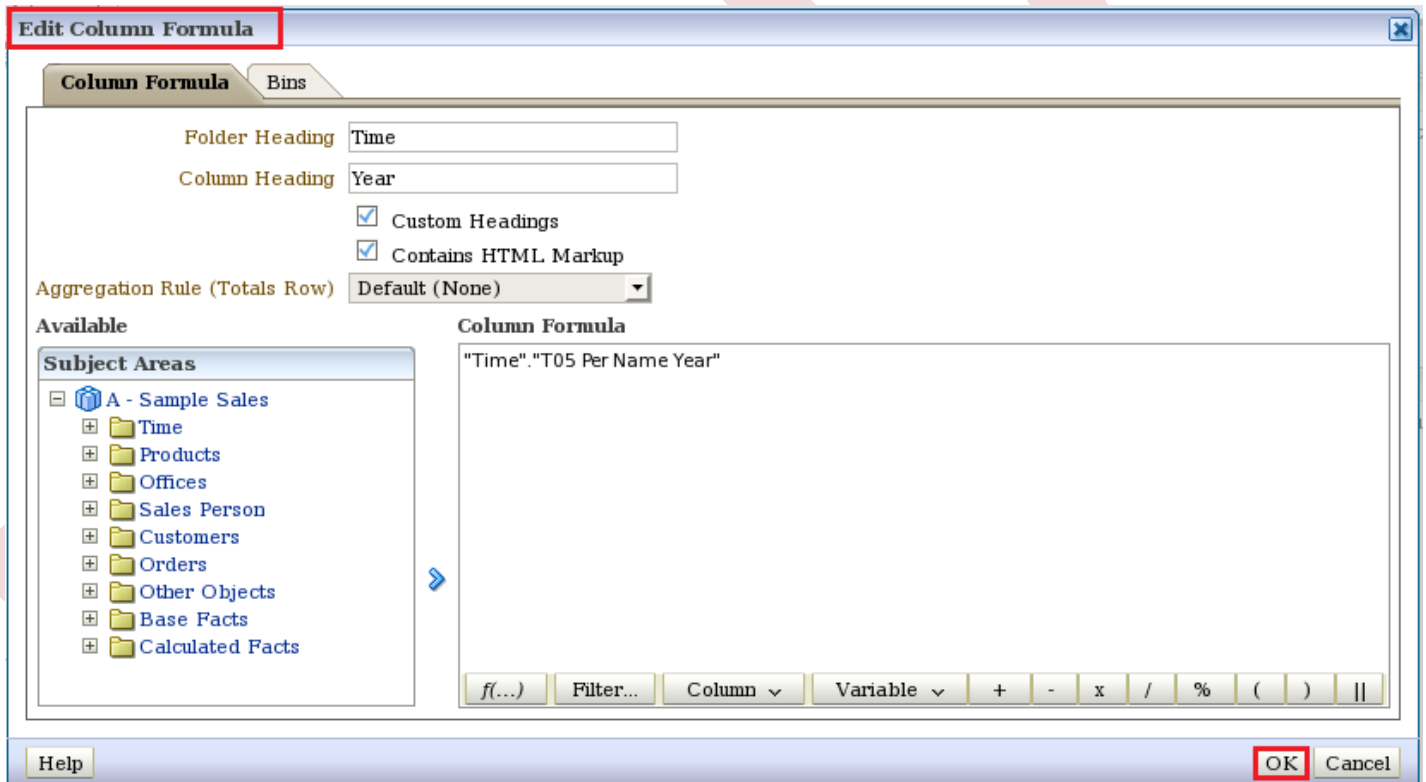
Click→Result.

T05 Per Name Year	T00 Calendar Date	P1 Product	1- Revenue
2008	1/3/2008	Touch-Screen T5	924
	1/6/2008	MPEG4 Camcorder	613
		7 Megapixel Digital Camer	2,092
		Game Station	3,128
	1/8/2008	LCD 36X Standard	1,361
		Touch-Screen T5	3,829
CompCell RX3		1,228	
MicroPod 60Gb		2,167	
1/9/2008	Touch-Screen T5	2,562	
	Tungsten E Plasma TV	1,905	
1/10/2008	V5x Flip Phone	4,195	
	7 Megapixel Digital Camer	3,890	
	CompCell RX3	4,128	
	7 Megapixel Digital Camer	717	
	HomeCoach 2000	2,281	
	LCD 36X Standard	4,016	
	LCD HD Television	2,587	

Step2 :-In Time(T05 Per Name Year)→Edit Formula.

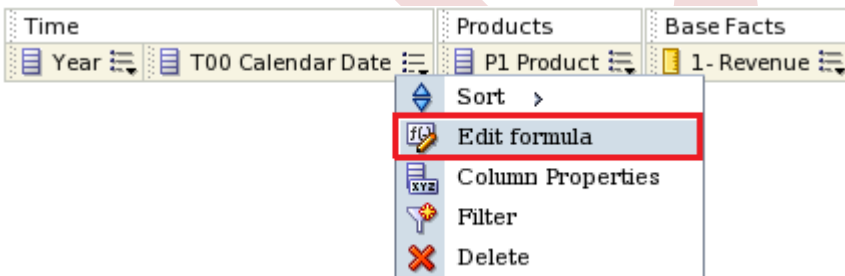


Edit Column Formula window will display. Here we Check → Custom Heading , Check → Contains HTML Markup. Custom Heading → Year.

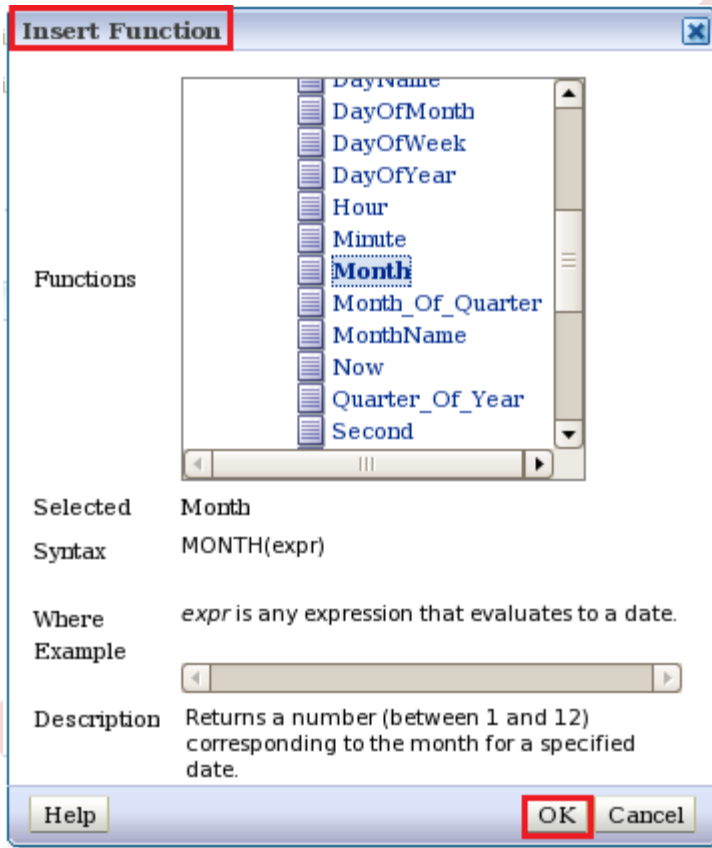


Click → Ok.

Step3:-In Time(T00 Calendar Date) → Edit Formula.

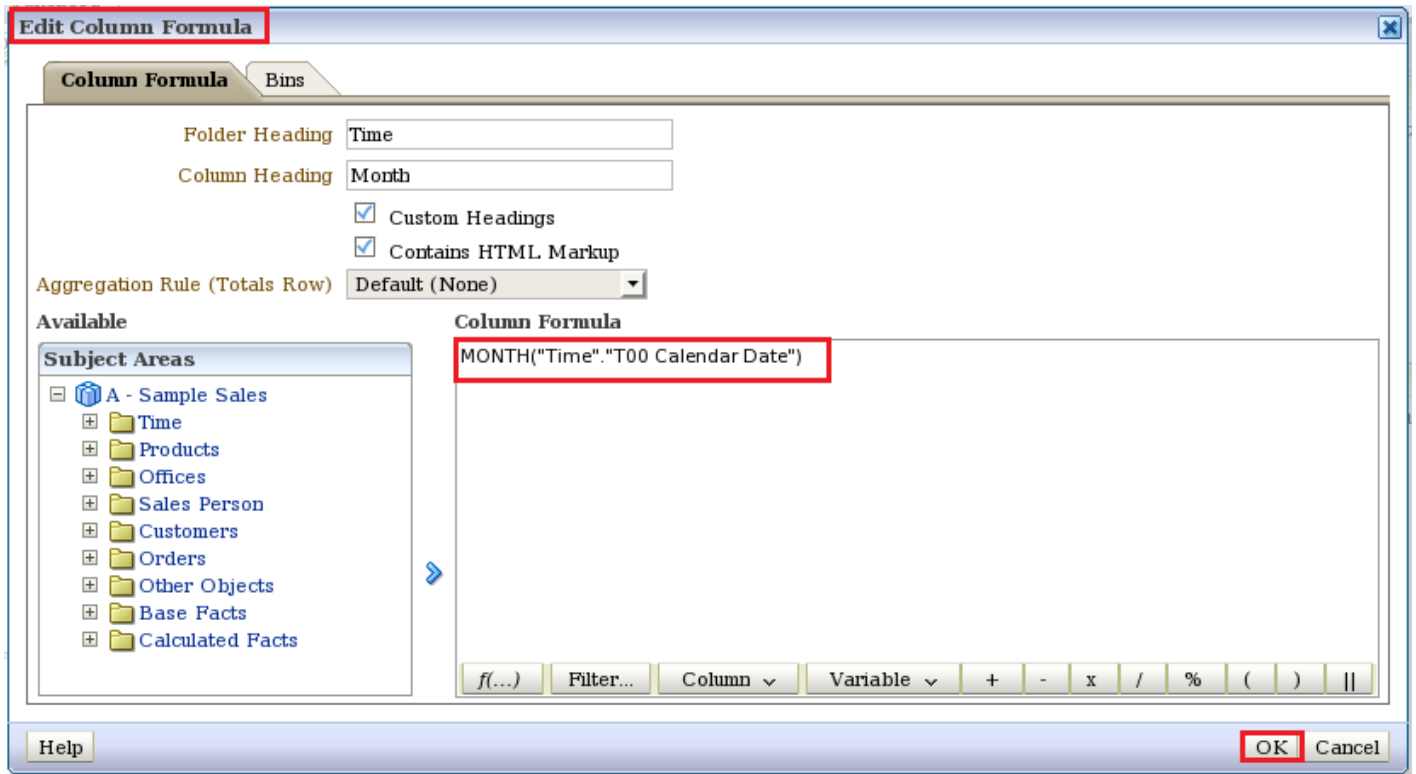


Edit Column Formula window will display. Here we Check→Custom Heading , Check→Contain HTML Markup. Custom Heading→Month.



Click→Ok.

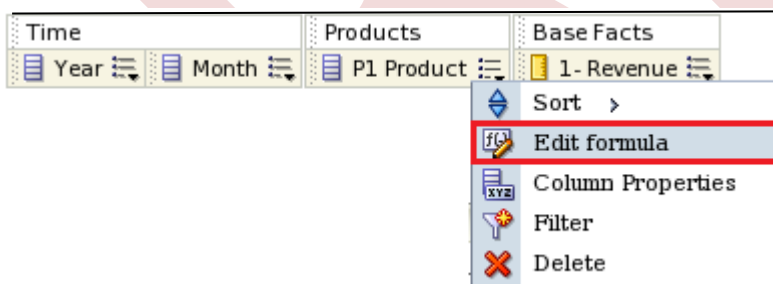
Here we see Column Formula.



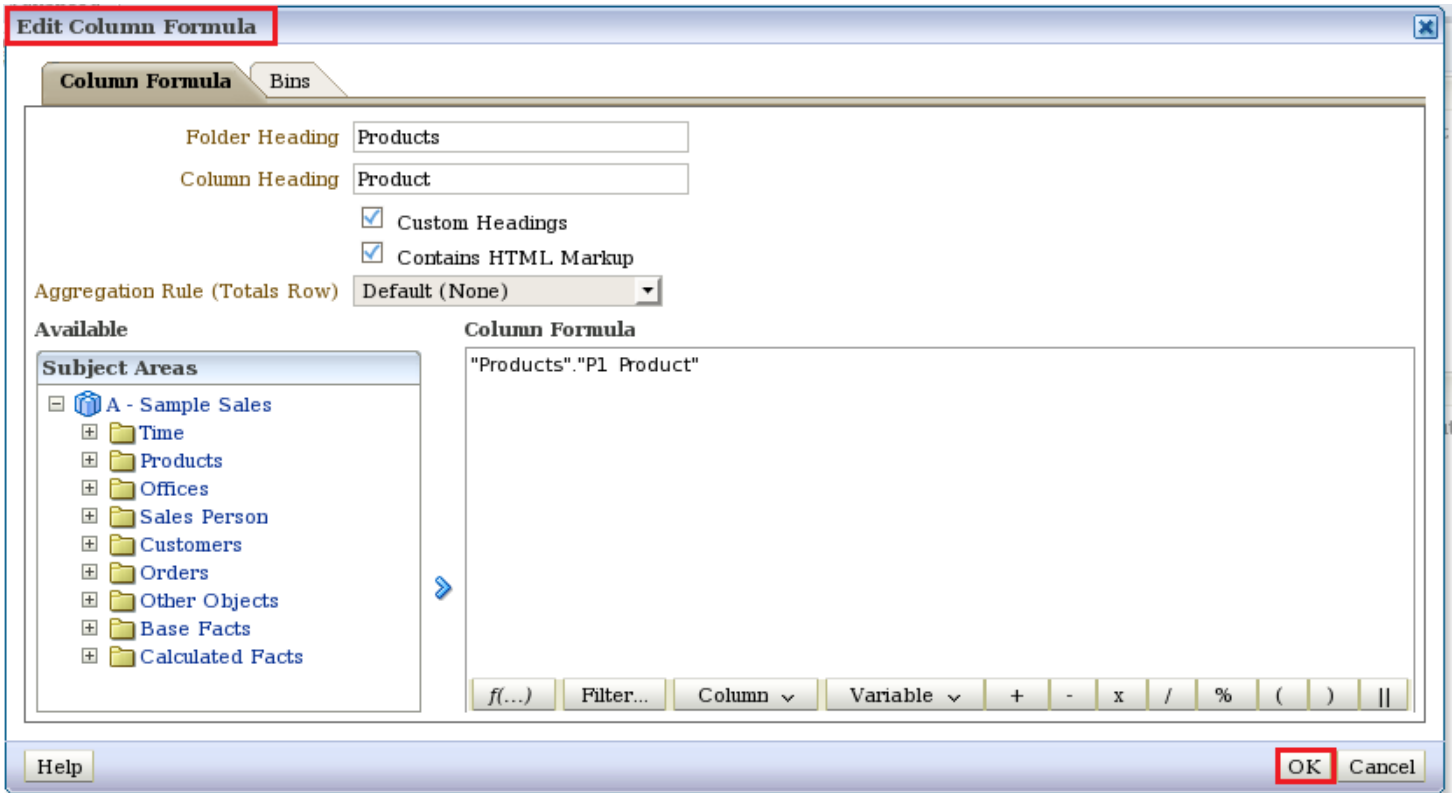
Click→Ok.

Year	Month	P1 Product	1- Revenue
2008	1	7 Megapixel Digital Camer	28,622
	1	Bluetooth Adaptor	13,153
	1	CompCell RX3	17,806
	1	Game Station	21,821
	1	HomeCoach 2000	7,370
	1	KeyMax S-Phone	20,600
	1	LCD 36X Standard	24,343
	1	LCD HD Television	20,714
	1	MP3 Speakers System	2,667
	1	MPEG4 Camcorder	13,583
	1	Maintenance	1,457
	1	MaxiFun 2000	20,876
	1	MicroPod 60Gb	25,978
	1	Plasma HD Television	6,463
	1	PocketFun ES	27,692
	1	SoundX Nano 4Gb	32,260
	1	Touch-Screen T5	16,901
	1	Tungsten E Plasma TV	10,033
	1	V5x Flip Phone	13,098
	2	7 Megapixel Digital Camer	59,969
	2	Bluetooth Adaptor	36,201
	2	CompCell RX3	25,387

Step4:-In Products(P1 Product)→Edit Formula.

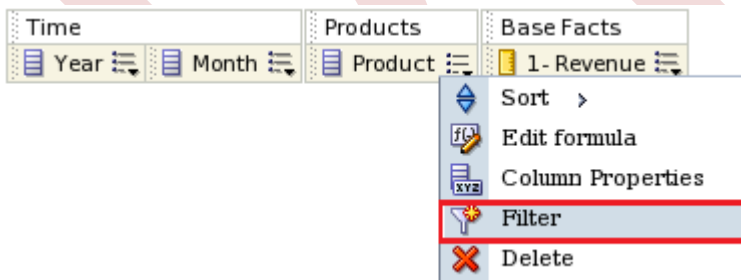


Edit Column Formula window will display. Here we Check→Custom Heading , Check→Contain HTML Markup. Custom Heading→Product.

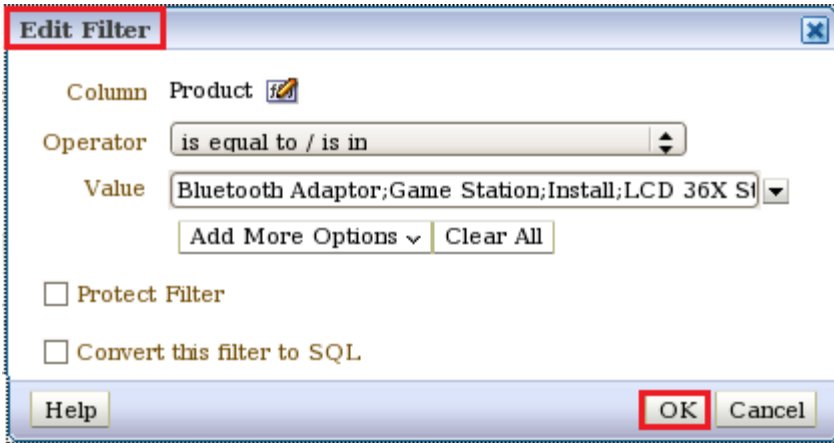


Click→Ok.

In Products(Product)→Filter.

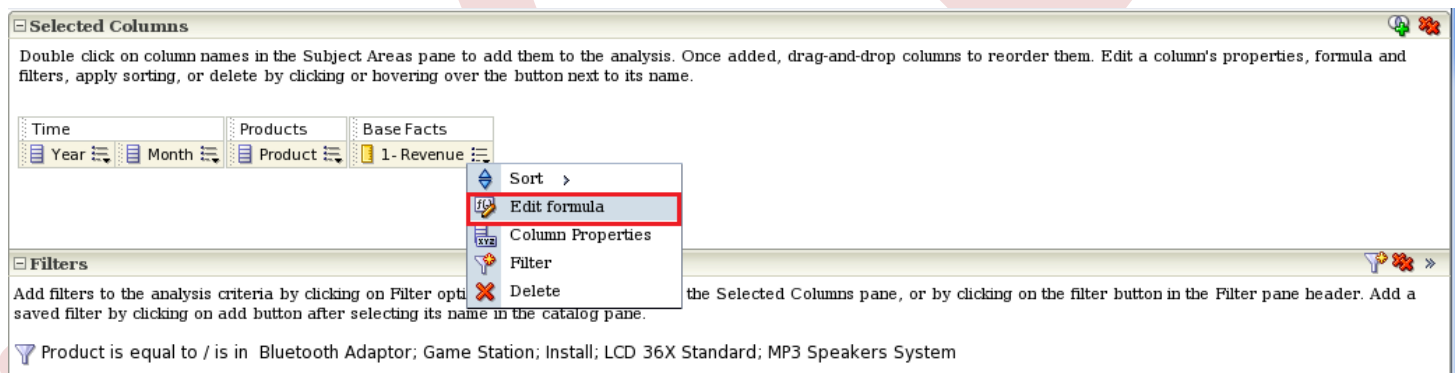


Edit Filter window will display. Select Operator→is equal to / is in.

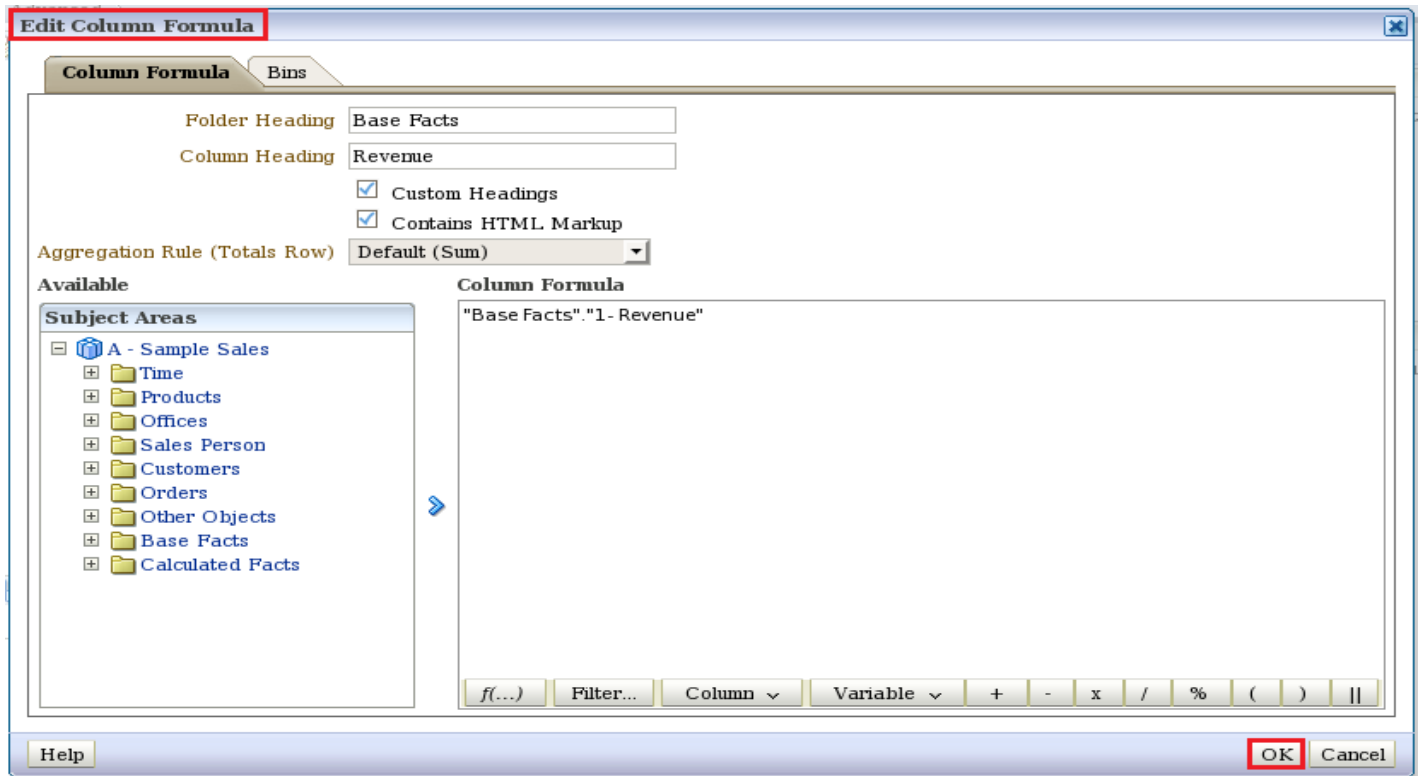


Click→Ok.

Step5:-In Base Facts(1-Revenue)→Edit Formula. Here we see the created filter.

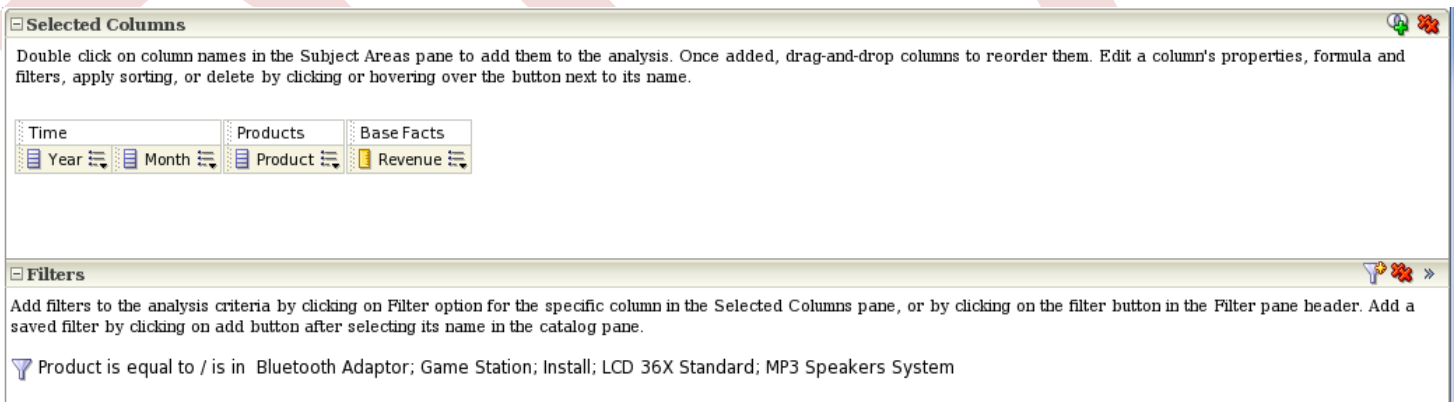


Edit Column Formula window will display. Here we Check→Custom Heading , Check→Contain HTML Markup. Custom Heading→Revenue.




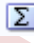
Click → Ok.

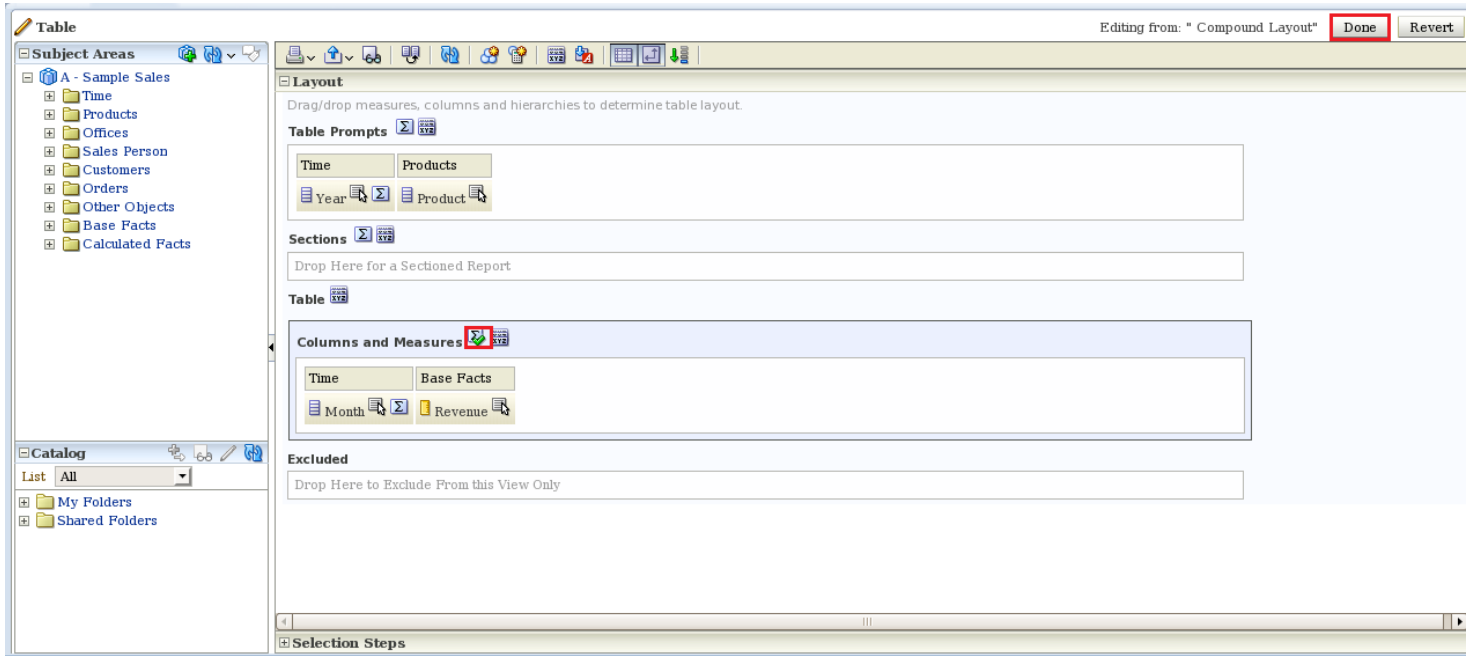
Step6:- Here we see the column after set properties



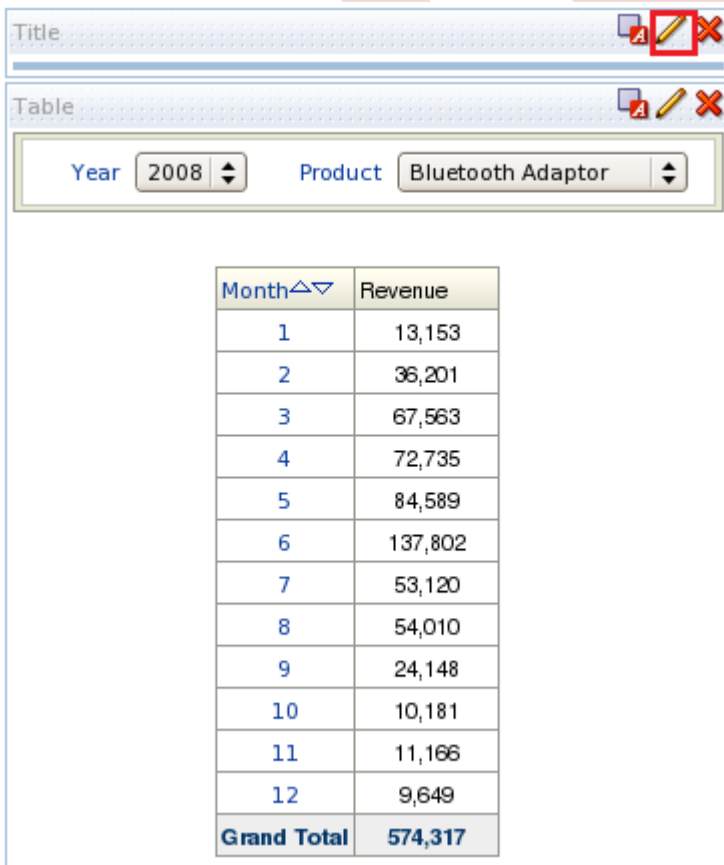
Step7:- Click → Result, See the result and Click →  Edit View.

Year	Month	Product	Revenue
2008	1	Bluetooth Adaptor	13,153
	1	Game Station	21,821
	1	LCD 36X Standard	24,343
	1	MP3 Speakers System	2,667
	2	Bluetooth Adaptor	36,201
	2	Game Station	31,108
	2	Install	4,023
	2	LCD 36X Standard	85,310
	2	MP3 Speakers System	14,886
	3	Bluetooth Adaptor	67,563
	3	Game Station	103,450
	3	Install	11,278
2009	3	LCD 36X Standard	134,545
	3	MP3 Speakers System	23,487
	4	Bluetooth Adaptor	72,735
	4	Game Station	94,618
2010	4	Install	7,269

After Click →  Edit View. Edit View window will display. Here we put **Year** and **Product** column into **Table Prompts** section. Click →  in Columns and Measures and Select → After. Click → Done.



Step8:-After Click → Done , we see the result. Click → Edit View.



After Click → Edit View. Title Edit View window will display. Here Title → Monthly Product

Revenue .Click→Done.

Title

Editing from: "Compound Layout" **Done** Revert

Title Monthly Product Revenue

Display Saved Name

Logo

Optional - URL of a title image. *Note: When running in a secured environment, only resources that are located on the Oracle BI Presentation Server may be used. These resources are referenced using a relative path prefixed with "fmap:".*

Subtitle

Started Time **Display date and time**

Help URL






Optional - URL for a document providing help on this analysis. *Note: When running in a secured environment, only resources that are located on the Oracle BI Presentation Server may be used. These resources are referenced using a relative path prefixed with "fmap:".*

Monthly Product Revenue

Time run: 10/22/2012 1:58:19 PM

Step9:-After Click→Done , we see the result.

Title   
Monthly Product Revenue
Time run: 10/22/2012 1:51:07 PM

Table   
Year  Product 

Month	Revenue
1	13,153
2	36,201
3	67,563
4	72,735
5	84,589
6	137,802
7	53,120
8	54,010
9	24,148
10	10,181
11	11,166
12	9,649
Grand Total	574,317