



OBIEE11g “How to Guide Series”

Hands-On guide OBIEE11 Date/Time functions Quarter_Of_Year Function

BISP is committed to provide BEST learning material to the beginners and advance learners. In the same series, we have prepared a complete “OBIEE11g How to Series” build on Sample OBIEE reports and Dashboard. Download our collection of “How to Series” for Oracle BI, Informatica, Data Stage product suite. There are 100s of case studies are available in our blog/site for free access for learners. Join our professional training program to learn from the experts.

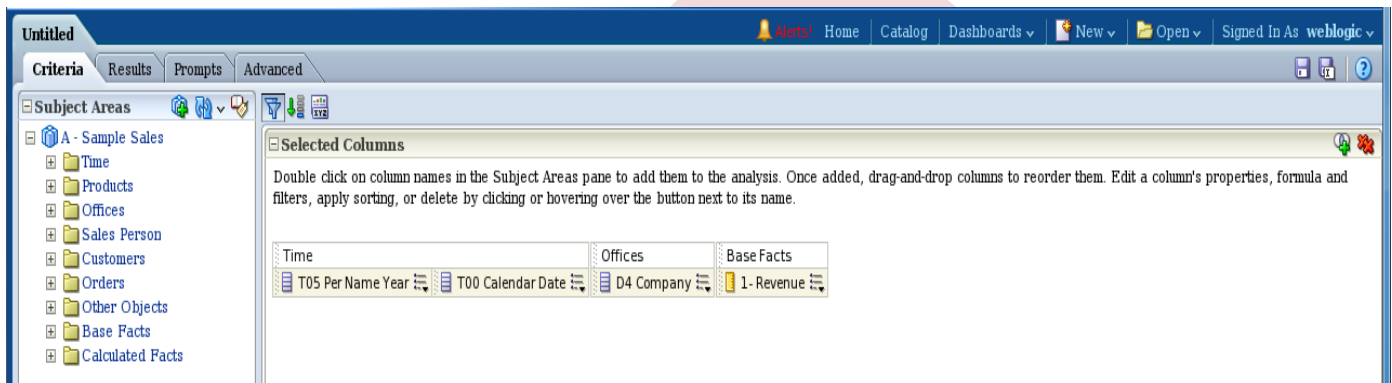
History:

Version	Description	Change	Author	Publish Date
0.1	Initial Draft		Upendra Upadhyay	1 st Jul 2012
0.1	1 st Review		Amit Sharma	5 th Jul 2012

Follow the below steps to create sample report and apply date/time function.

Step1 :- Click on New→Analysis then chose subject area from Select Subject Area.

Below window will open , Select tables column from left side Subject Area pane within Criteria. Here we can double click on tables column or drag and drop tables column from Subject Area pane to Selected Columns pane as below.

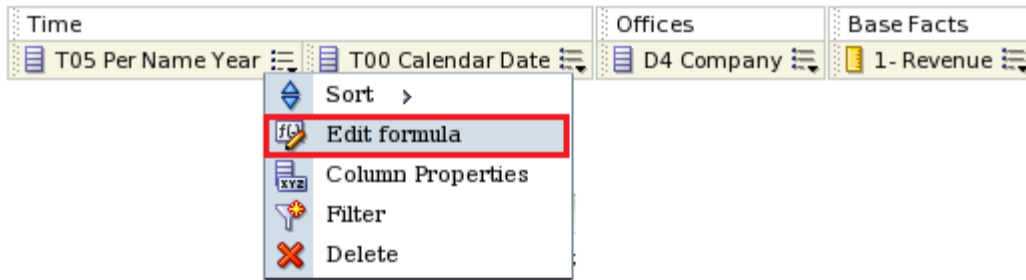


Click→Result.

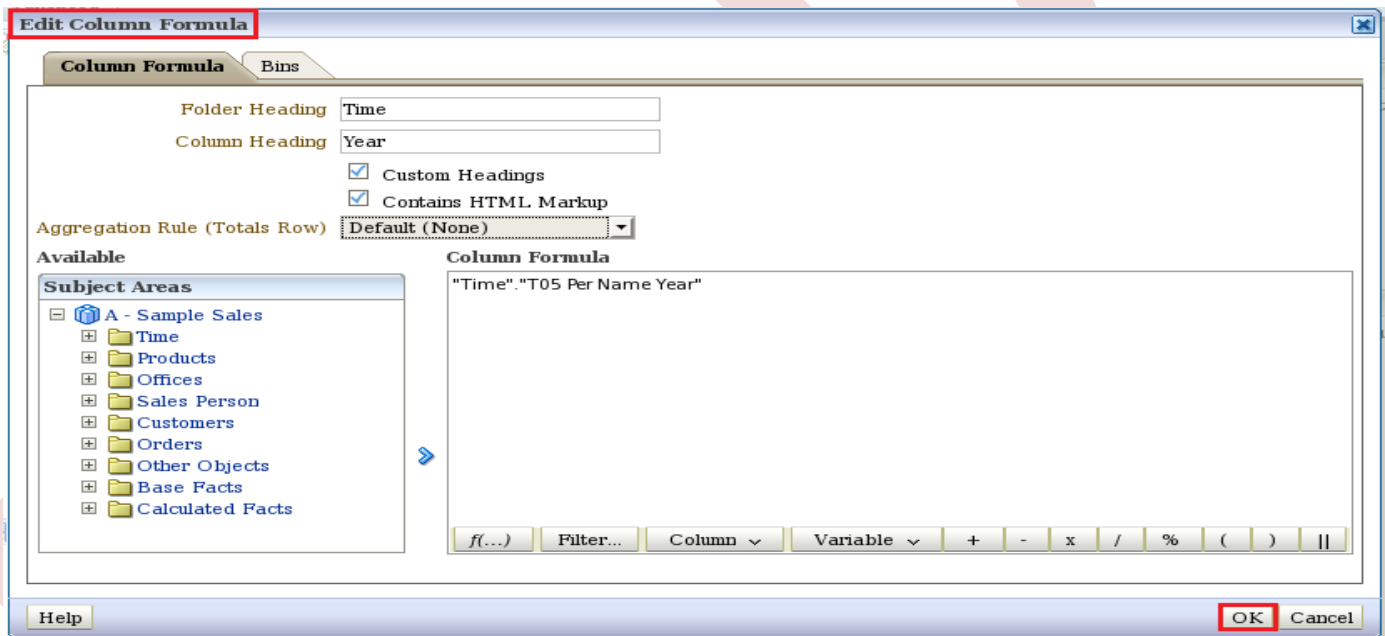
Compound Layout

T05 Per Name Year	T00 Calendar Date	D4 Company	1- Revenue
2008	1/3/2008	Stockplus Inc.	924
	1/6/2008	Genmind Corp	613
	1/7/2008	Genmind Corp	4,538
		Stockplus Inc.	2,744
		Tescare Ltd.	3,128
	1/8/2008	Genmind Corp	3,395
		Stockplus Inc.	2,562
		Tescare Ltd.	6,100
	1/9/2008	Genmind Corp	3,890
		Tescare Ltd.	4,128

Step2 :-In Time(T05 Per Name Year)→Edit Formula.

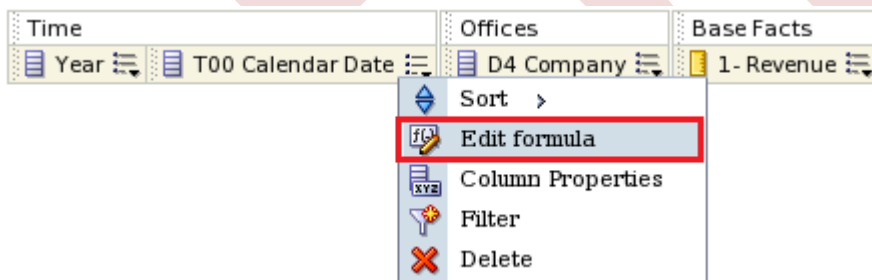


Edit Column Formula window will display. Here we Check→Custom Heading , Check→Contain HTML Markup. Custom Heading→Year.

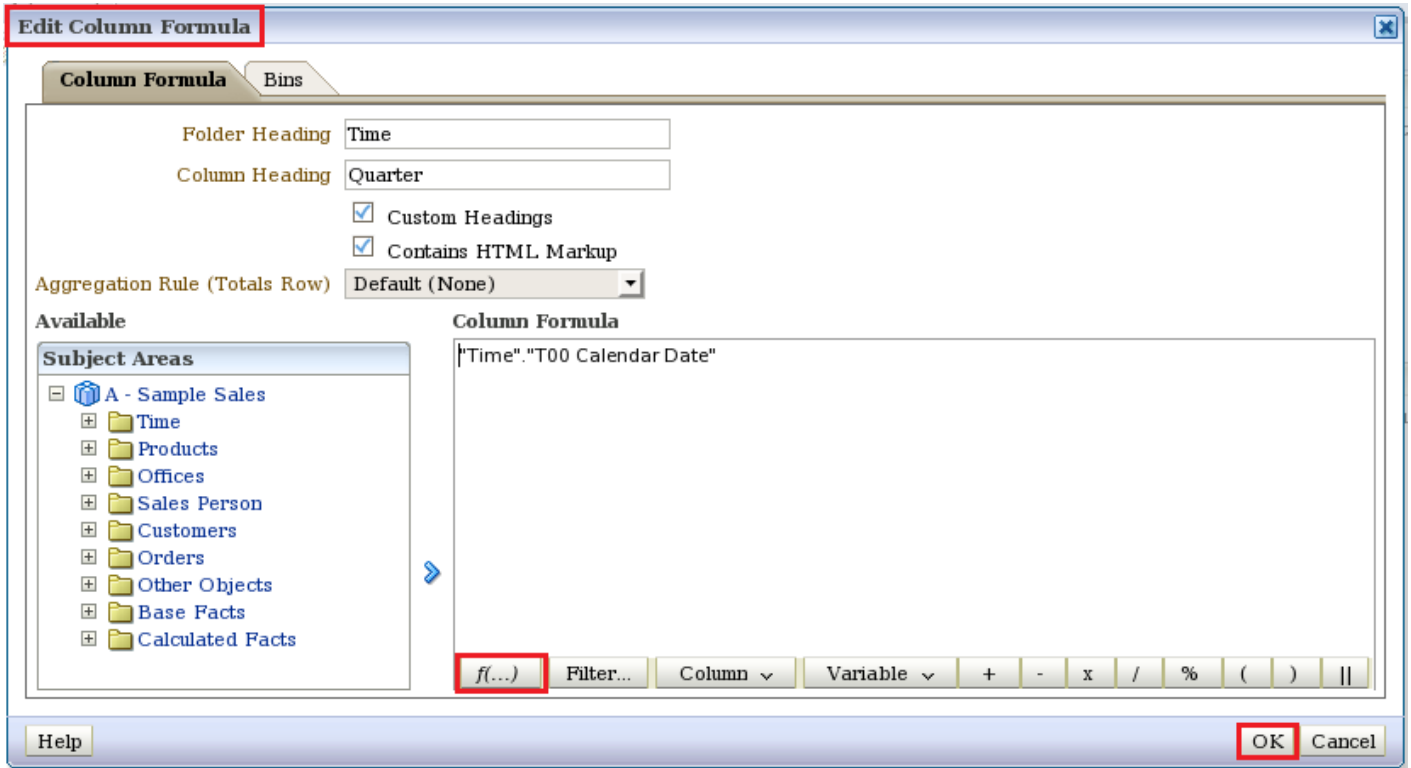


Click→Ok.

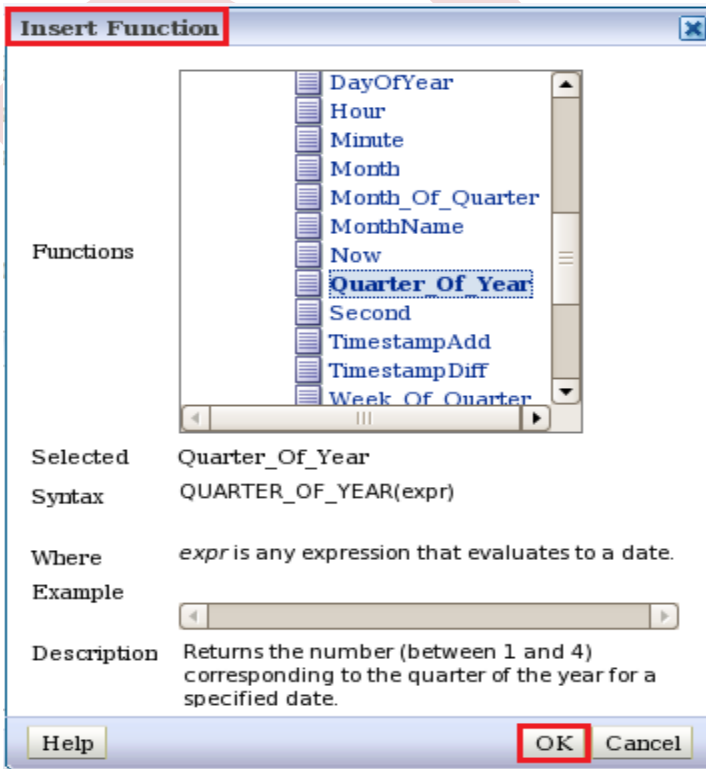
Step3:-In Time(T00 Calendar Date)→Edit Formula.



Edit Column Formula window will display. Here we Check→Custom Heading , Check→Contain HTML Markup. Custom Heading→Quarter. Click→Function.

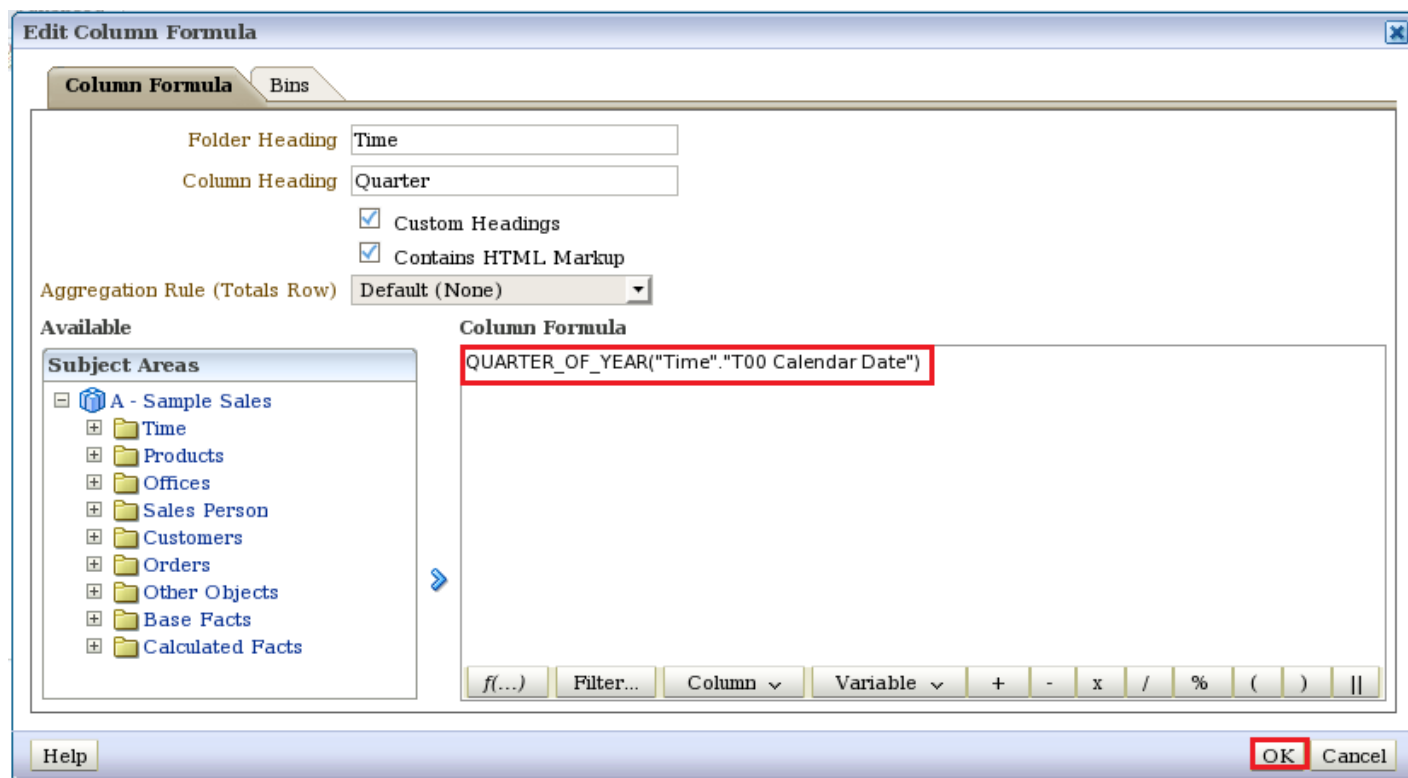


Insert Function window will display.



Click→Ok.

Here we see Column Formula.



Click→Ok.

Now Click→Result Tab and see Result.

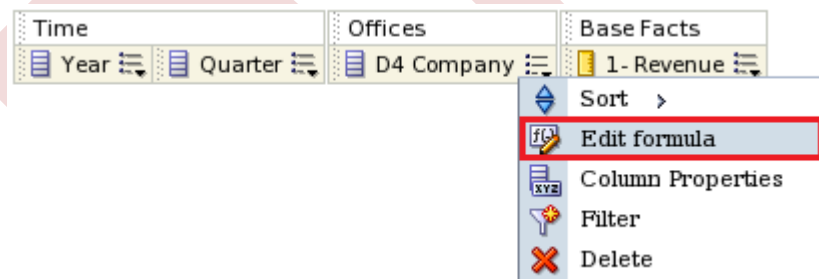
Compound Layout

Title

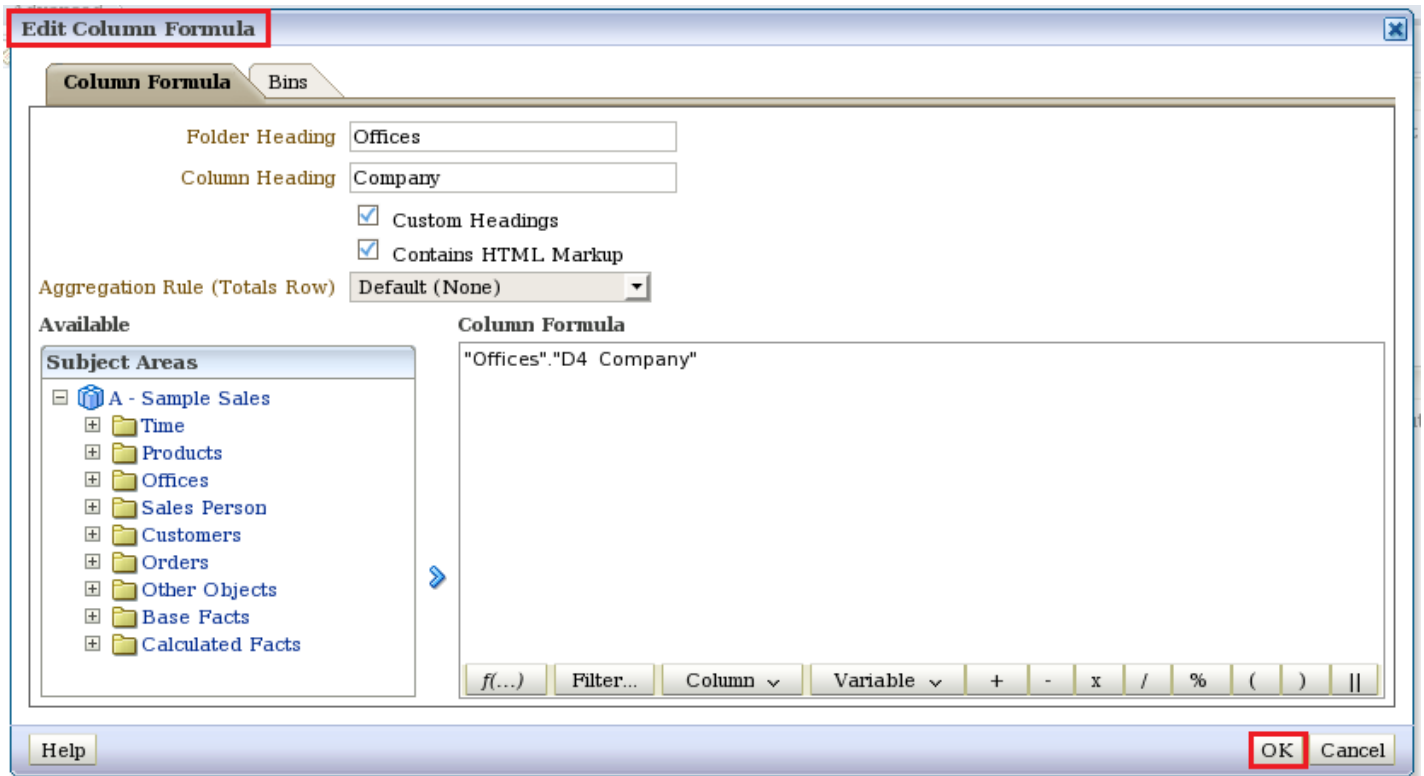
Table

T05 Per Name Year	Quarter	D4 Company	1- Revenue
2008	1	Genmind Corp	932,961
	1	Stockplus Inc.	741,234
	1	Tescare Ltd.	1,033,491
	2	Genmind Corp	2,672,378
	2	Stockplus Inc.	2,191,716
	2	Tescare Ltd.	3,245,622
	3	Genmind Corp	1,441,689
	3	Stockplus Inc.	1,227,819
	3	Tescare Ltd.	1,669,336
	4	Genmind Corp	423,117
	4	Stockplus Inc.	413,327
	4	Tescare Ltd.	507,310
2009	1	Genmind Corp	800,472
	1	Stockplus Inc.	703,836
	1	Tescare Ltd.	1,031,680
	2	Genmind Corp	2,675,915
	2	Stockplus Inc.	2,013,663

Step4:-In Offices(D4 Company)→Edit Formula.



Edit Column Formula window will display. Here we Check→Custom Heading , Check→Contain HTML Markup. Custom Heading→Company.

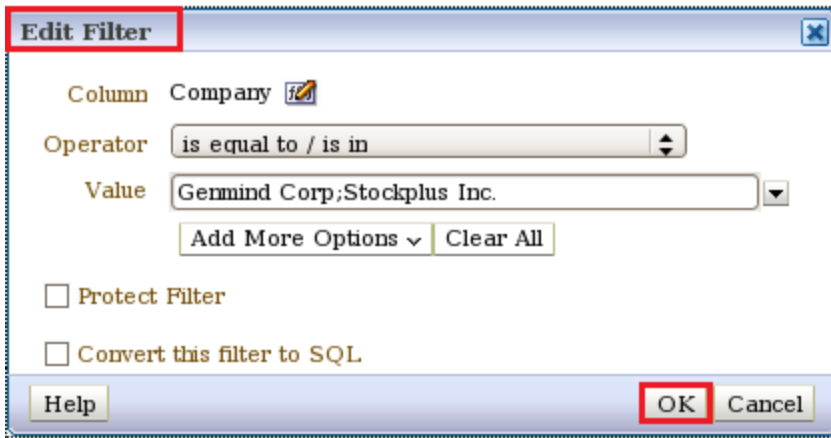


Click→Ok.

In Offices(Company)→Filter.

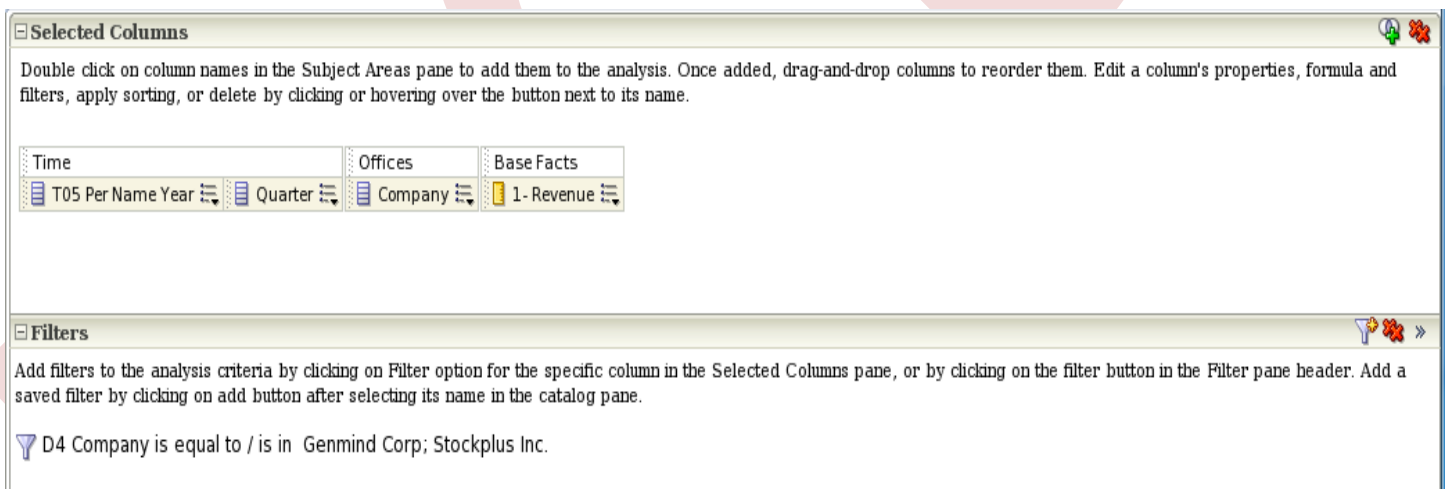


Edit Filter window will display. Select Operator→is equal to / is in.

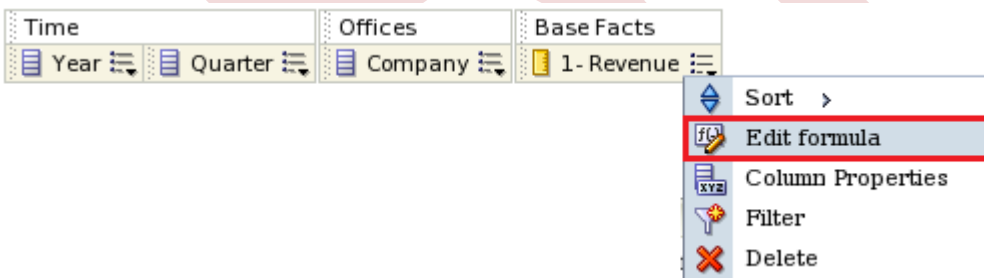


Click→Ok.

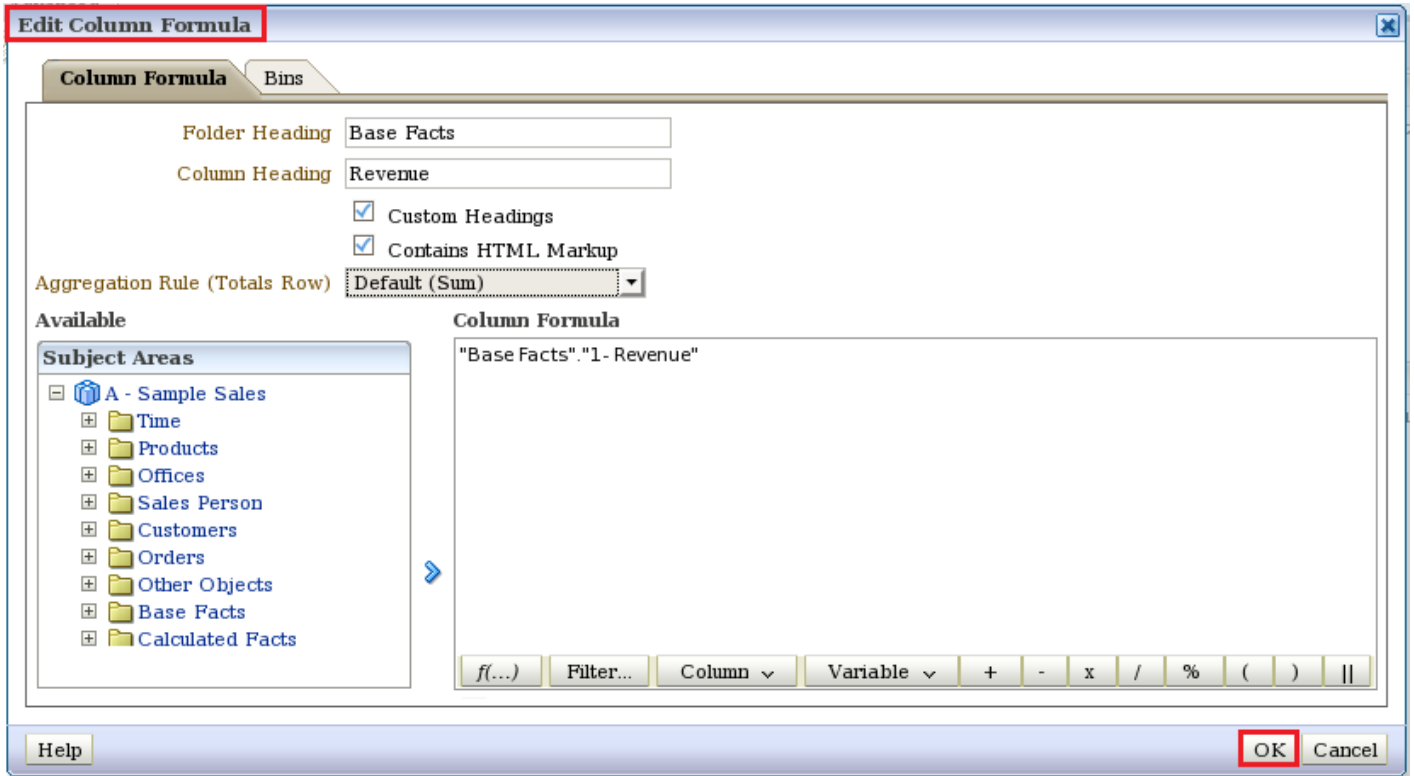
Here we see the created filter.



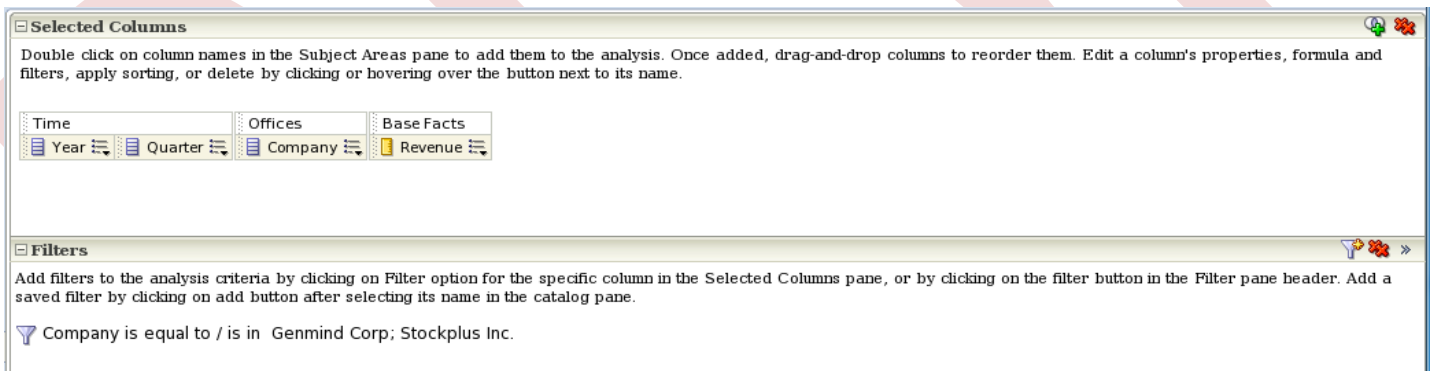
Step5:-In Base Facts(1- Revenue)→Edit Formula.




Edit Column Formula window will display. Here we Check→Custom Heading , Check→Contain HTML Markup. Custom Heading→Revenue.



Step6:-Here we see the column after set properties.



Step7:- Click → Result , See the result and Click →  Edit View.

Compound Layout



Title

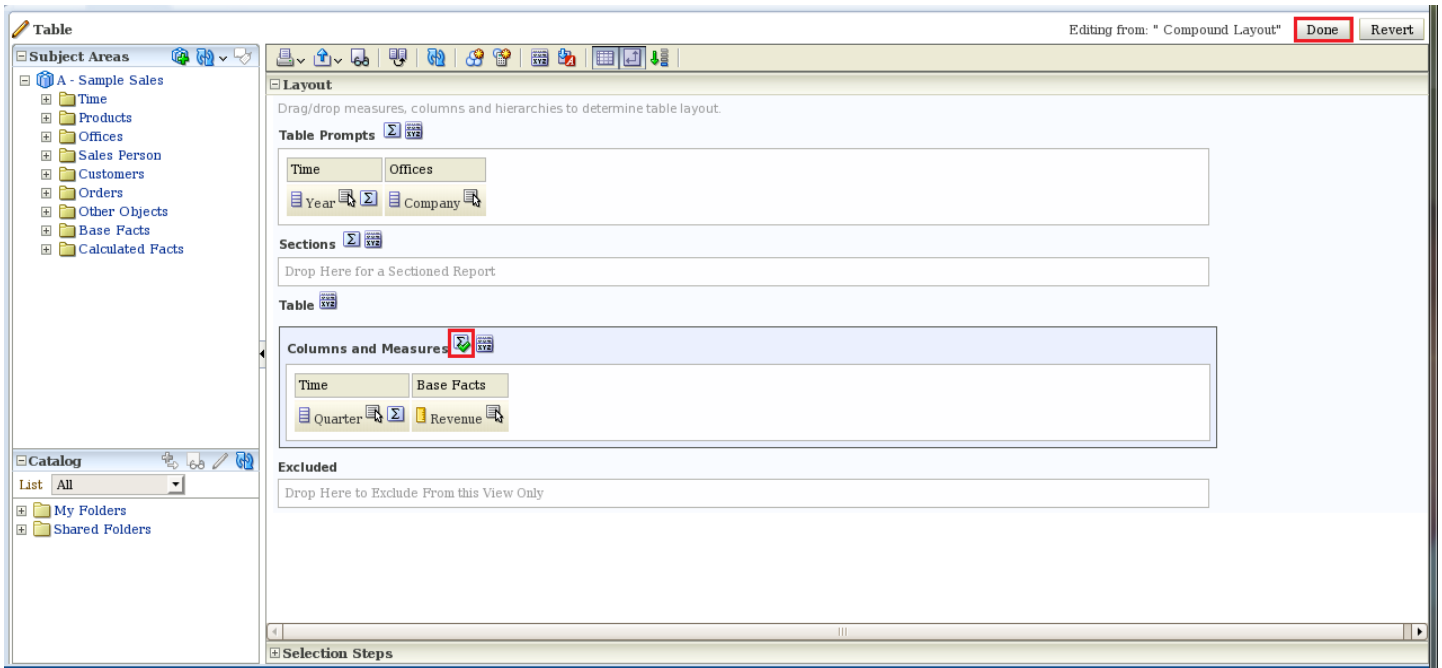


Table

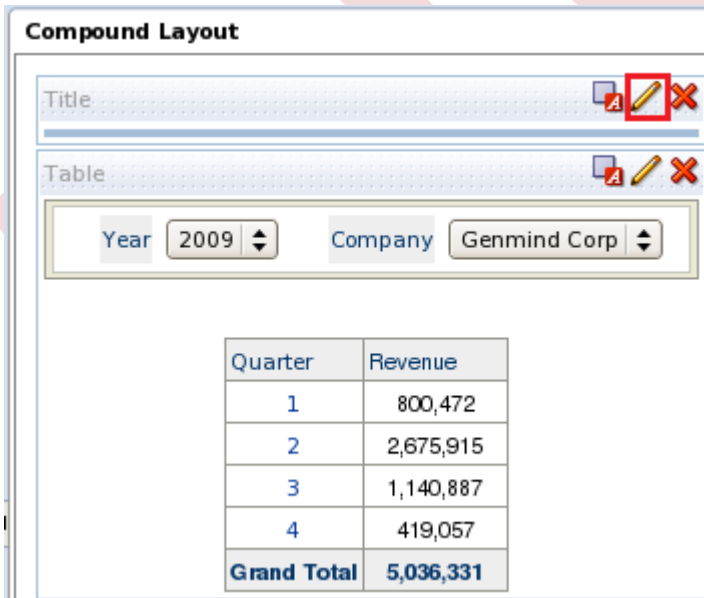



Year	Quarter	Company	Revenue
2008	1	Genmind Corp	932,961
	1	Stockplus Inc.	741,234
	2	Genmind Corp	2,672,378
	2	Stockplus Inc.	2,191,716
	3	Genmind Corp	1,441,689
	3	Stockplus Inc.	1,227,819
	4	Genmind Corp	423,117
	4	Stockplus Inc.	413,327
2009	1	Genmind Corp	800,472
	1	Stockplus Inc.	703,836
	2	Genmind Corp	2,675,915
	2	Stockplus Inc.	2,013,663
	3	Genmind Corp	1,140,887
	3	Stockplus Inc.	952,312
	4	Genmind Corp	419,057
	4	Stockplus Inc.	330,024
2010	1	Genmind Corp	1,124,983

After Click →  Edit View. Edit View window will display. Here we put **Year** and **Company** column into **Table Prompts** section. Click →  in Columns and Measures and Select → After. Click → Done.



Step8:-After Click → Done , we see the result. Click →  Edit View.



After Click →  Edit View. Title Edit View window will display. Here Title → Quarterly Revenue, Subtitle → Quarterly Revenue of Companies According to Selected Year. Click → Done.

Editing from: "Compound Layout" **Done** **Revert**

Title: Quarterly Revenue

Display Saved Name

Logo:

Optional - URL of a title image. Note: When running in a secured environment, only resources that are located on the Oracle BI Presentation Server may be used. These resources are referenced using a relative path prefixed with "fmap:".

Subtitle: Quarterly Revenue Of Companies According to

Started Time: Do not display

Help URL:

Optional - URL for a document providing help on this analysis. Note: When running in a secured environment, only resources that are located on the Oracle BI Presentation Server may be used. These resources are referenced using a relative path prefixed with "fmap:".

Quarterly Revenue
 Quarterly Revenue Of Companies According to Selected Year

Step9:-After Click → Done , we see the result.

Quarterly Revenue
 Quarterly Revenue Of Companies According to Selected Year

Table

Year: 2008 Company: Genmind Corp

Quarter	Revenue
1	932,961
2	2,672,378
3	1,441,689
4	423,117
Grand Total	5,470,146